

SDLChat Translator™

User Guide

1.	What is SDLChat Translator™?	2
2.	What are the requirements for using SDLChat Translator™?	2
3.	Download for Installation	2
3.1.	When can you download the SDLChat Translator™	2
3.2.	Running the installer	2
4.	Description of the SDLChat Translator™	2
4.1.	The SDLChat Translator™ window	2
4.2.	The SDLChat Translator™ menu items	5
5.	How to use the SDLChat Translator™ with AIM	6
5.1.	Connections required	6
5.2.	If you already have one AIM buddy window open	6
5.3.	If you already have more than one AIM buddy window open	7
5.4.	If you have no AIM buddy windows open	7
5.5.	Selecting a language for incoming messages	7
5.6.	Selecting a language for outgoing messages	7
5.7.	Sending a translated message to your buddy	7
5.8.	Receiving a translated message from your buddy	8
5.9.	Changing SDLChat Translator™ settings	8
6.	How to use the SDLChat Translator™ as a registered AOL user	8

1. What is SDLChat Translator™?

The SDLChat Translator™ is a program that interacts with AOL Instant Messenger and an online automated translation service to provide instantaneous translations of incoming and outgoing chat messages without the user having to cut and paste text from one application to another.

2. What are the requirements for using SDLChat Translator™?

- You need a Windows 98/Me/2000/XP computer.
- You need AOL Instant Messenger, version 5.0 or higher, installed on the computer. You also need a AOL Instant Messenger account, available at no cost at www.aim.com.
- You need Internet access.
- You need to create an SDLChat Translator™ account at <http://secure.freetranslation.com/chat.asp>

3. Download for Installation

3.1. When can you download the SDLChat Translator™

When your subscription payment has been accepted, you will be given the opportunity to download the SDLChat Translator™ installer. You will also be sent an e-mail with a webpage address from which you can download the SDLChat Translator™ installer at a later date, if required.

3.2. Running the installer

You can either download the SDLChat Translator™ installer to your local hard disk and then run the setup program from there or you can choose to run the installer directly from the download screen.

4. Description of the SDLChat Translator™

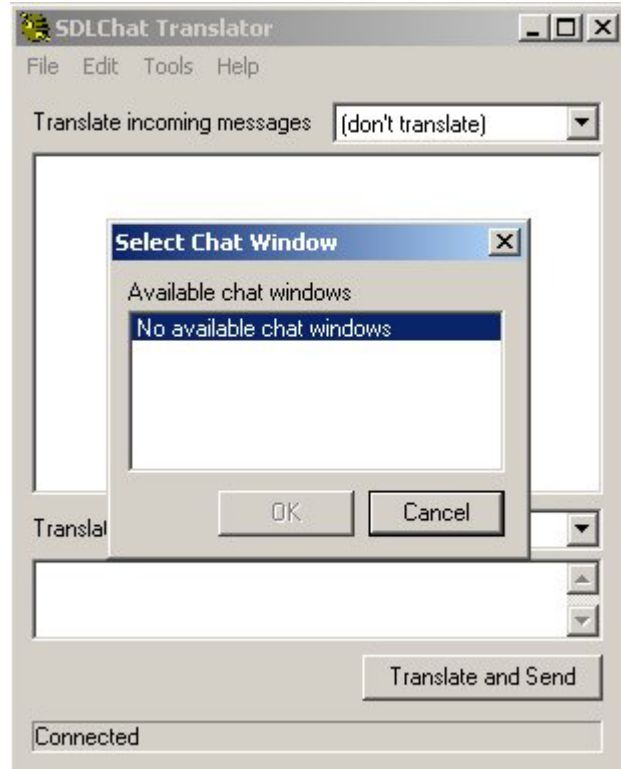
4.1. The SDLChat Translator™ window

- After installation you will see the SDLChat Translator™ icon on your desktop. The icon looks like this:



- Double clicking on the icon will open the SDLChat Translator™ window:

It looks like this if it is opened without an AIM buddy window open.



It looks like this if it is opened with one AIM buddy windows open:



In this instance the buddies name is SDLUser and their default language is French.

And if it is opened with more than one AIM chat window already open, you will see a dialog box that asks you to select one of the available AIM chat windows for translation.



4.2. The SDLChat Translator™ menu items

File

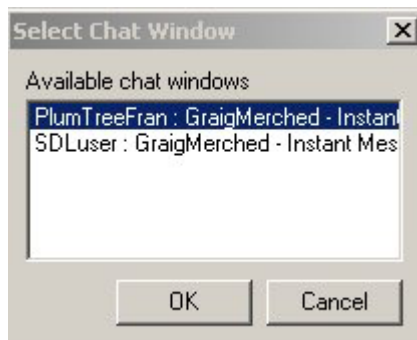
- Save Chat messages: Allows you to save the chat messages as a .rtf file or a .txt file.
- Exit: Disconnects from the online translation server and closes SDLChat Translator.

Edit

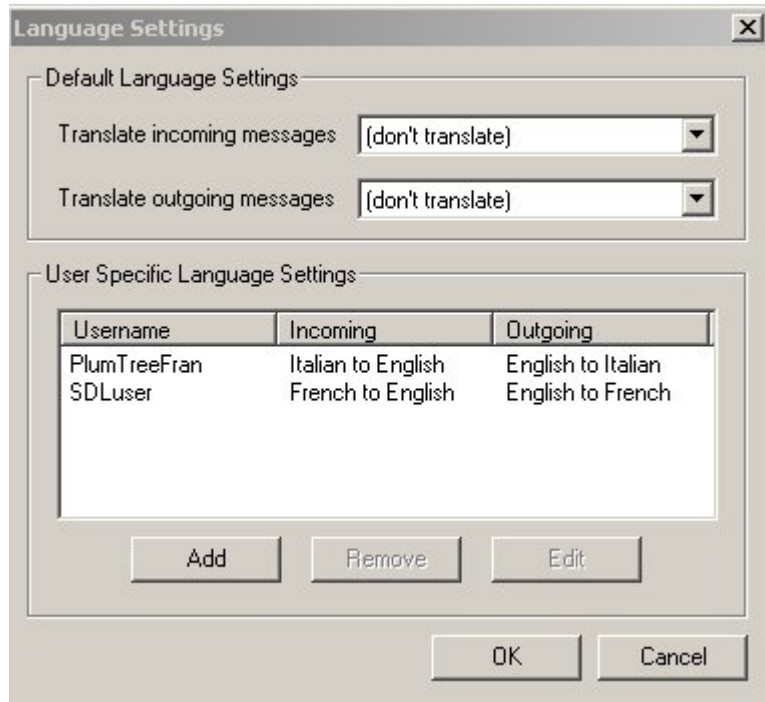
- Allows texts to be Cut, Copy and Pasted.
- Allows all text to be selected.

Tools

- Select Chat Window: Opens this dialog box to allow the selection of an AIM chat window for translation.



- Default languages:
 - Allows you to select default languages for incoming and outgoing messages.
 - Allows you to specify languages for buddies. SDLChat Translator™ will use preselected language settings for any buddy whose name appears on this list.



Clicking on the Add button allows you to select language settings for a new buddy.



Help

5. How to use the SDLChat Translator™ with AIM

5.1. Connections required

- To use the SDLChat Translator™ you need to be connected to the Internet and be signed on as an AIM user. If you are not an AIM user you can obtain this software by going to <http://www.aim.com>.

5.2. If you already have one AIM buddy window open

Double-click on the SDLChat Translator™ icon on your desktop. This will open the SDLChat Translator™. The SDLChat Translator™ window will be linked to the open AIM buddy window

5.3. If you already have more than one AIM buddy window open

Double-click on the SDLChat Translator™ icon on your desktop. This will open the SDLChat Translator™. The SDLChat Translator™ window will identify all the AIM buddy windows you have open and present you with a choice of which buddy window you wish to be linked to. You can open as many SDLChat Translator™ windows as you wish and link each one to a different AIM buddy window.

5.4. If you have no AIM buddy windows open

Double-click on the SDLChat Translator™ icon on your desktop. This will open the SDLChat Translator™. The SDLChat Translator™ window will give you a message that there are no available buddy windows

In order to use the SDLChat Translator™ you need to open one or more AIM buddy windows. Open a buddy window and select the Tools/Select Chat window item from your SDLChat Translator™ window. You will be shown a list of available buddy windows to link to. Select the one you wish to link to from the list and click ok.

5.5. Selecting a language for incoming messages

You must now select the language to translate from for the incoming messages from your buddy. This is done by selecting a language from the drop down menu under incoming messages. If your buddy speaks French then select your incoming messages to “French to English”

5.6. Selecting a language for outgoing messages

Now select the language into which you want your messages to your buddy translating into. This is done by selecting a language from the drop down menu under outgoing messages. If your buddy speaks French then select your outgoing messages to “English to French”

5.7. Sending a translated message to your buddy

To send a message to your buddy in their language type your message in the lower text box of the SDLChat Translator™ window. Once your message is complete either click on the “Send and Translate” button or press the “Enter” key on your keyboard.

The message will be translated into the language of your choice. The text you have typed will appear in the upper text window of the SDLChat Translator™ and the translated text that your buddy will see appears in the normal AIM window. If you wish to, you can minimise the normal AIM window. If you close down this window the SDLChat Translator™ will no longer have a link to translate for and will not send a translated message to your buddy.

5.8. Receiving a translated message from your buddy

When your buddy sends you a message, the text they have typed appears in the normal AIM Window and the translation of their text message will appear in the upper text box of the SDLChat Translator™ Window.

5.9. Changing SDLChat Translator™ settings

- Use this window to change your e-mail address, password and your AIM name. These must be the e-mail address and password that are registered with SDL International and your name that is registered with the AIM service.
- If you are subscribing from home there is no requirement to specify a proxy server connection. If you are subscribing from within a company environment and are using a proxy server set the proxy settings to use "Internet Explorer proxy settings". Please contact your system administrator for the details of your proxy server if you wish to specify your own proxy server name.

6. How to use the SDLChat Translator™ as a registered AOL user

If you use America Online as your Internet service provider, then we recommend that you create a new sign-in name for AIM that is different from any of your AOL screen names.

When you log on to AOL with the AOL browser (such as AOL 9.0), you are automatically logged on to a browser-based chat client. SDLChat Translator™ does not interact with this browser-based client.

AIM is actually an independent program that can run along side the AOL browser. If you log in to AIM with one of your AOL screen names, however, you will receive all incoming chat messages twice: once in AIM and again in the AOL browser client. Outgoing messages that you type into SDLChat Translator™ will only be sent via AIM.

While it is possible to have both AIM and the AOL browser-based chat client running simultaneously with the same screen name, we recommend the following:

- Log on to AOL as you usually would, using one of your regular screen names.
- Then, open AIM and sign in with the unique AIM name that you have created.
- Initiate a chat with someone in the AIM window.
- Then open SDLChat Translator, which will begin monitoring the AIM window.

AIM is a trademark or registered trademark of America Online, Incorporated. All other trademarks and registered trademarks are recognised as being the property of their respective owners.