



## Contents

<b>1.</b>	What is SDL Chat Translator™?	2
<b>2.</b>	System requirements for using SDL Chat Translator™	2
<b>3.</b>	Download for Installation	2
<b>3.1</b>	When can you download the SDL Chat Translator™	2
<b>3.2</b>	Running the installer	2
<b>4.</b>	Using Chat Translator	3
<b>4.1</b>	Getting started	3
<b>4.2</b>	Set your Chat Translator username and password.	4
<b>4.3</b>	Setting the languages to translate	4
<b>4.4</b>	Switching translations on and off	5
<b>4.5</b>	Sending a translated message to your buddy	5
<b>4.6</b>	Receiving a translated message from your buddy	6
<b>4.7</b>	If you and your buddy both have the Chat Translator plug-in	6
<b>5.</b>	Troubleshooting	6
<b>5.1</b>	Incorrect Username or Password	6
<b>5.2</b>	Account locked	6
<b>5.3</b>	Why am I being directed to the Microsoft site to install .Net?	7
<b>5.4</b>	The SDL Chat Translator options are not available on the Actions menu	7
<b>5.5</b>	System Requirements	7
<b>5.5</b>	Remove SDL Chat Translator	7

## 1. What is SDL Chat Translator™?

The SDL Chat Translator™ integrates with AOL Instant Messenger 6.8 and translates messages via an online automated translation service. Chat Translator provides instant translations of incoming and outgoing chat messages without the need to cut and paste text from one application to another.

## 2. System requirements for using SDL Chat Translator™

- You need a Windows 2000/XP/Vista computer with .Net 2.0 installed.
- Without .Net 2.0, you will be prompted to install this as part of the SDL Chat Translator installation process.
- You need AOL Instant Messenger, version 6.8 installed on the computer. You also need an AOL Instant Messenger account Screen Name. Both are available free at <http://www.aim.com>
- AOL AIM 6.8 requires Internet Explorer 6.0
- You need Internet access.
- You need to create an SDL Chat Translator™ account by subscribing at <http://www.chattranslator.com>

## 3. Download for Installation

### 3.1. When can you download the SDL Chat Translator™

Once your subscription payment has been completed, you will be given the opportunity to download the SDL Chat Translator™ installer. You will also be sent an e-mail with a webpage address from which you can download the SDL Chat Translator™ installer at a later date, if required.

### 3.2 Running the installer

AOL IM version 6.8 needs to be installed on your computer and configured correctly before you install Chat Translator.

**Close down AOL IM before installing SDL Chat Translator.**

You can either download the SDL Chat Translator™ installer to your

local hard disk and then run the setup program from there or you can choose to run the installer directly from the download screen.

You must have administration access to your PC and be able to install programmes.

Follow the onscreen instructions



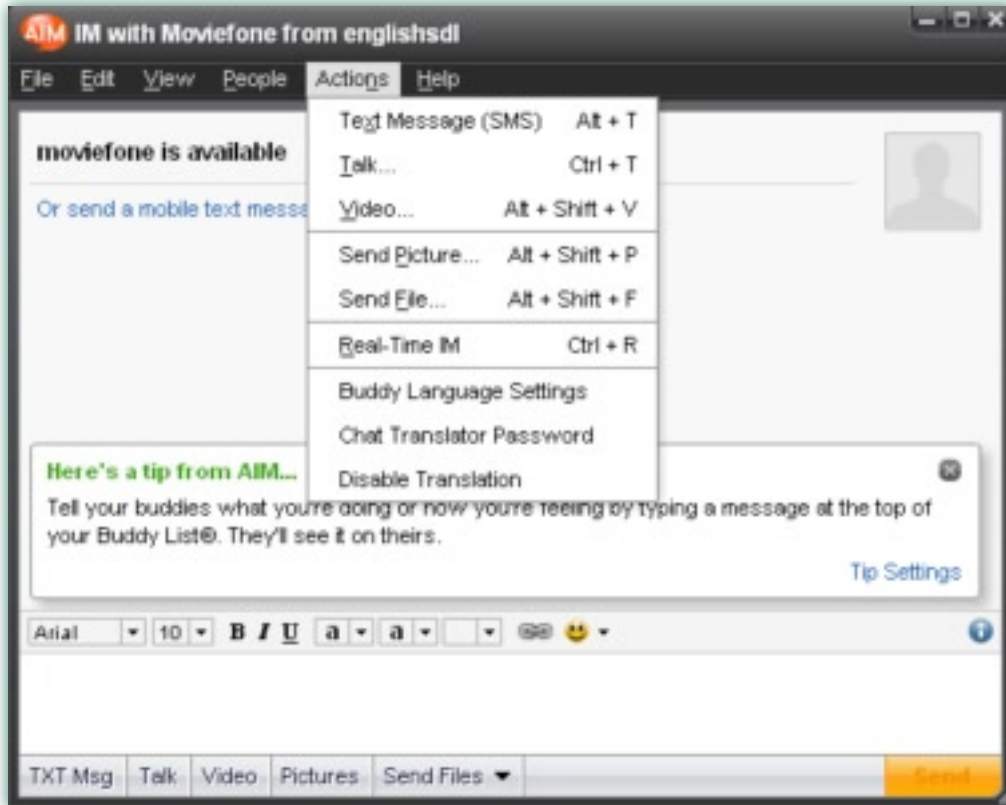
## 4. Using Chat Translator

Once Chat Translator has successfully installed, you can begin to use it.

You need to be connected to the Internet and be signed in as an AIM 6.8 user. If you are not an AIM 6.8 user you can obtain this software and a Screen Name by going to <http://www.aim.com>.

### 4.1 Getting started

1. Open and log into AIM 6.8
2. Double-click on a buddy's name to start a chat with them and this will open a chat window.
3. On the Actions menu are the options available for Chat Translator.



## 4.2 Set your Chat Translator username and password.

Set your username and password for Chat Translator from the 'Actions' menu, using the 'Chat Translator Password' option. This is the username and password you chose when you registered for the tool.

You can reset your password from here if you have forgotten your details.



## 4.3 Setting the languages to translate

The default setting for all buddies is 'Do not translate'. This option

needs to be changed before any inbound or outbound messages will be translated.

#### 4.3.1 Selecting a language for outgoing messages

Select the language which your outgoing messages will be translated into. This is done by selecting a language from the drop down menu for outgoing messages. If your buddy speaks French then select your outgoing messages as “English to French”

#### 4.3.2 Selecting a language for incoming messages

You must now select the language to translate from for the incoming messages from your buddy. This is done by selecting a language from the drop down menu for incoming messages. If your buddy speaks French then select your incoming messages to “French to English”

Click OK to confirm the language preferences for this buddy.



### 4.4 Switching translations on and off

Translations can be switched on and off from the Actions Menu. Remember to change the language for each buddy – the default is



set to 'Do not translate'. See section 4.3 for changing the buddy language.

### 4.5 Sending a translated message to your buddy

Once the settings are complete, to send a message to your buddy in their language type your message in the lower box on the AIM 6.8 window. Once your message is complete either click on the "Send" button or press the "Enter" key on your keyboard.

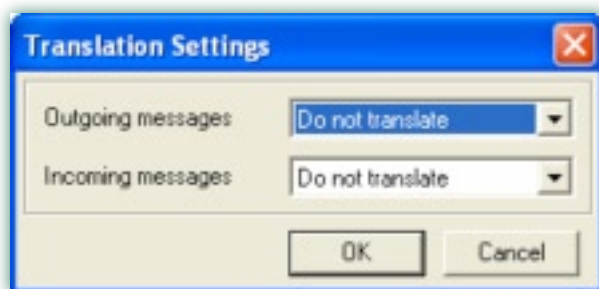
The message will be translated into the language of your choice. You will be able to see your original message, and the translation in brackets and blue text.

### 4.6 Receiving a translated message from your buddy

When your buddy sends you a message, the translated text they have typed appears in the normal AIM 6.8 window in black text, and you can also see the original language they typed in brackets and blue text.

### 4.7 If you and your buddy both have the Chat Translator plug-in

If both you and your buddy have the Chat Translator plug-in only one of you needs to set the language settings. The other person can switch their buddy language settings to 'Do not translate'. If this setting is not specified, the Chat Translator will still work.



## 5. Troubleshooting

### 5.1 Incorrect Username or Password

If you enter the incorrect username or password for SDL Chat Translator, you will see an error message. This message

will continue to be shown until the username or password is corrected.

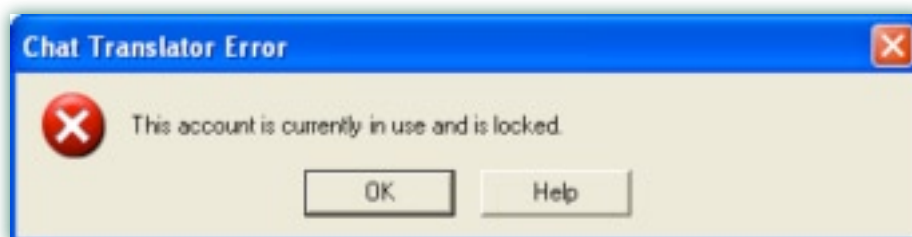
If you have forgotten your username or password for SDL Chat Translator, then they can be reset via <https://secure.freetranslation.com/account/password.asp>.



To stop this message being shown you can switch off translation, however you will not be able to use the service until you enter the correct username and password combination and switch translation on using the Actions menu.

## 5.2 Account locked

If you are trying to use an account which is already in use on another PC, then you will see this error message.



To resolve this, you need to ensure that the Chat Translator account you are using is not already in use. The account details are only applicable to you and your subscription, and usernames and passwords should not be given to anyone else.

## 5.3 Why am I being directed to the Microsoft site to install .Net?

Chat Translator works with Windows 2000 and above. Versions of Windows below Vista (for example 2000/XP) may require .Net 2.0 to be installed before Chat Translator can be installed.



If you do not have .Net 2.0 installed, then you may be prompted to install it. Once it is installed, you will be able to install Chat Translator.

### 5.4 The SDL Chat Translator options are not available on the Actions menu

If the SDL Chat Translator options are not visible on the Actions menu within a buddy's message window, make sure you have installed SDL Chat Translator successfully. You also must close down and restart AIM for the files to be updated with the SDL Chat Installer.

### 5.5 System Requirements

- You need a Windows 2000/XP/Vista computer with .Net 2.0 installed.
- Without .Net 2.0, you will be prompted to install this as part of the SDL Chat Translator installation process.
- You need AOL Instant Messenger, version 6.8 installed on the computer. You also need an AOL Instant Messenger account (Screen Name), both are available free at <http://www.aim.com>
- AOL AIM 6.8 requires Internet Explorer 6.0

### 5.6 Remove SDL Chat Translator

To remove SDL Chat Translator, go to Control Panel, Add or Remove Programs and remove 'SDL Chat Translator'. Follow the on-screen instructions.

AIM is a trademark or registered trademark of America Online, Incorporated. All other trademarks and registered trademarks are recognised as being the property of their respective owners.